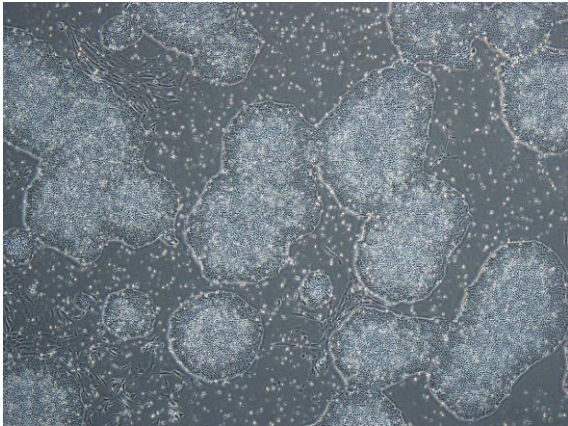
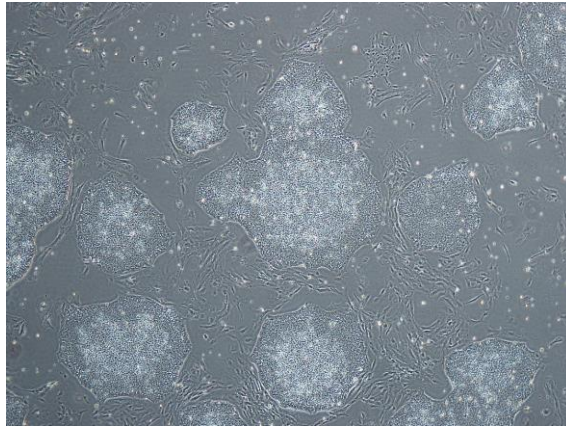


【 CiRA-j-1010 】 Morphology of iPSC colonies

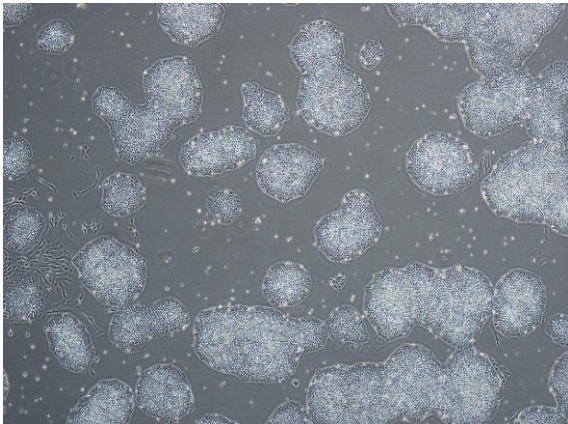
CiRA-j-1010-A: passage-2



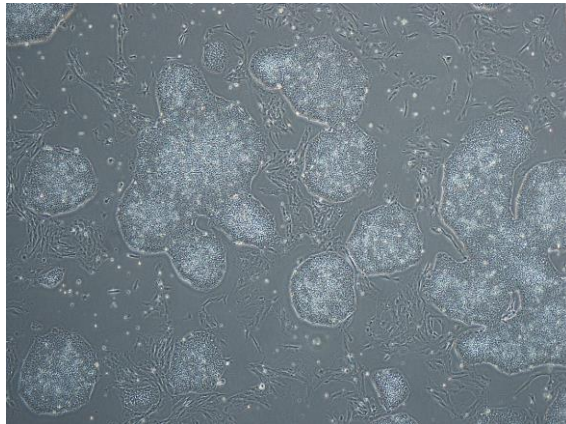
CiRA-j-1010-B: passage-2



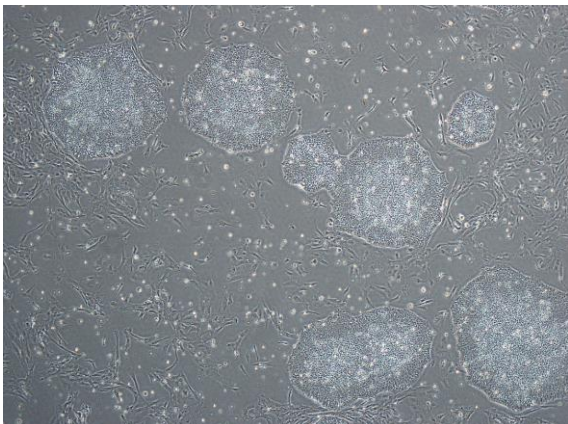
CiRA-j-1010-C: passage-2



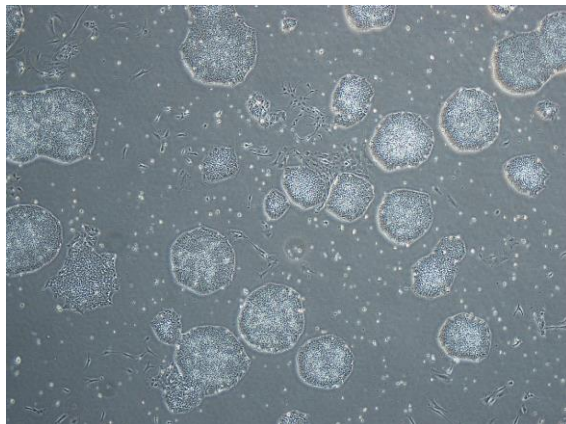
CiRA-j-1010-D: passage-2



CiRA-j-1010-E: passage-2



CiRA-j-1010-F: passage-2



(All images were captured at 4x magnification)